

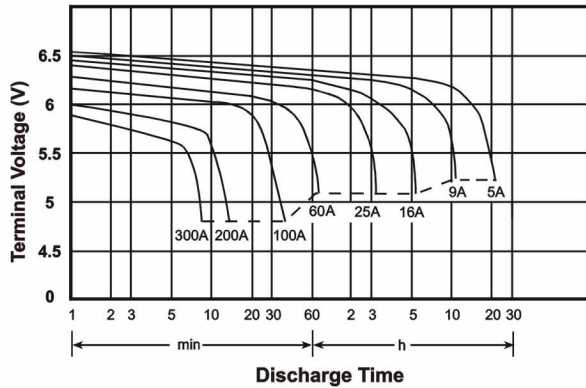


NON-SPILLABLE SEALED RECHARGEABLE BATTERY

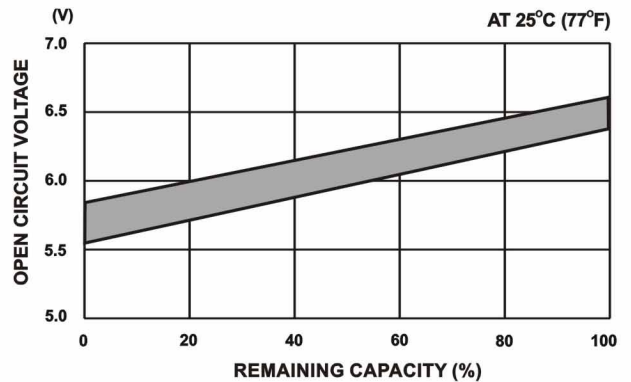
# TY-6-100

☆ SPECIFICATION	☆ CHARACTERISTICS
● NOMINAL VOLTAGE : 6 V	● CAPACITY 25 °C / 77 °F
● NOMINAL CAPACITY(20 hrs) : 100.0 Ah	20 hr @ 5 A : 100 Ah
● DIMENSIONS	10 hr @ 9 A : 90 Ah
TOTAL HEIGHT : 210 mm ( 8.27 inches )	5 hr @ 16 A : 80 Ah
CONTAINER HEIGHT : 206 mm ( 8.11 inches )	1 hr @ 60 A : 60 Ah
LENGTH : 195 mm ( 7.68 inches )	1 C @ 100 A : 50 Ah
WIDTH : 170 mm ( 6.69 inches )	● INTERNAL RESISTANCE( 25°C , 77 °F ) : 1.65 mΩ
WEIGHT : APPROX 17.8 kg ( 39.2 lbs )	● CHARGING VOLTAGE ( 25°C , 77 °F )
● MAX DISCHARGE CURRENT : 800 A ( 5 sec )	STANDBY USE : 2.275±0.025 V/CELL
● MAX SHORT- DURATION DISCHARGE CURRENT : 2000 A( 0.1 sec )	: (-3.3mV / °C / CELL)
● STANDARD TERMINALS : RT-24	CYCLE USE : 2.45±0.05 V/CELL
● CONTAINER MATERIAL : GENERAL GRADE ABS	: (-5 mV / °C / CELL)
	● MAX CHARGING CURRENT : 30 A

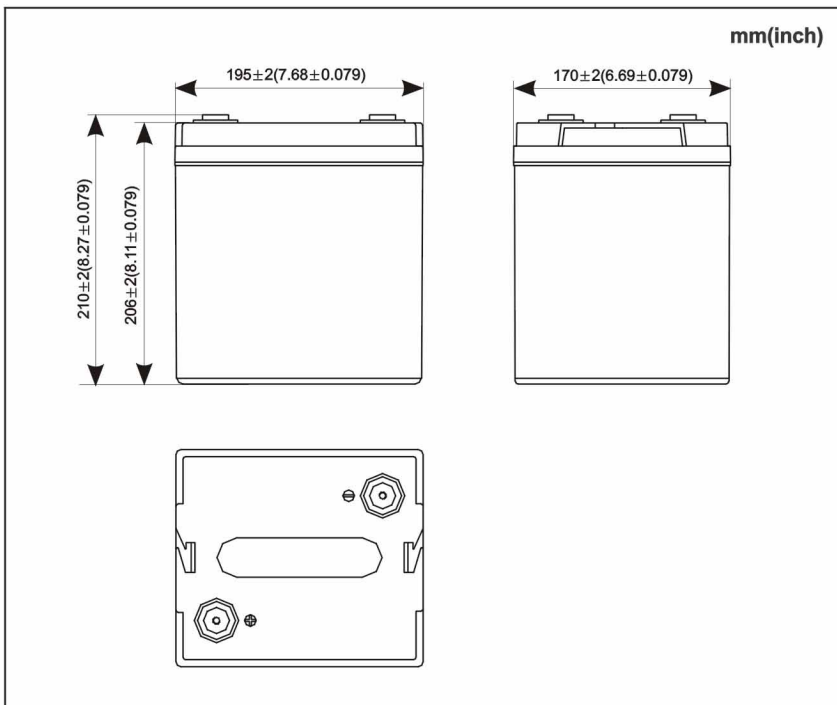
Discharge Characteristics 25 °C ( 77 °F )



OPEN CIRCUIT VOLTAGE VS REMAINING CAPACITY



## ☆ Dimensions



## ☆ Terminal

