

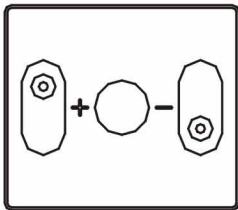
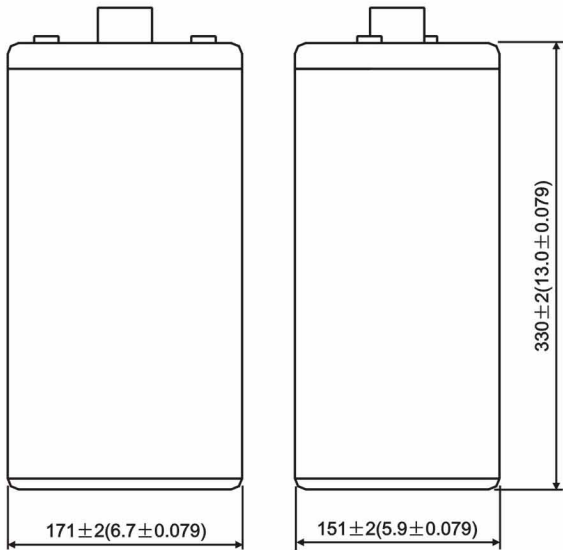


NON-SPILLABLE SEALED RECHARGEABLE BATTERY

2V, 300Ah

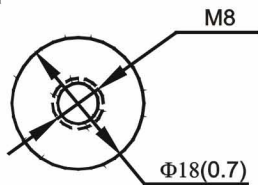
☆ SPECIFICATION	☆ CHARACTERISTICS
● NOMINAL VOLTAGE : 2 V	● CAPACITY 25 °C / 77 °F
● NOMINAL CAPACITY(10 hrs) : 300.0 Ah	10 hr @ 30A :300 Ah
● DIMENSIONS	5 hr @ 48 A :240 Ah
TOTAL HEIGHT : 366 mm (14.4 inches)	3 hr @ 75 A :225 Ah
CONTAINER HEIGHT : 330 mm (13.0 inches)	1 hr @ 165A : 165 Ah
LENGTH : 171 mm (6.7 inches)	1 C @ 300 A : 150Ah
WIDTH : 151 mm (5.9 inches)	● INTERNAL RESISTANCE(25°C , 77 °F) : 0.47 mΩ
● WEIGHT : APPROX 21 kg (46.3 lbs)	● CHARGING VOLTAGE (25°C , 77 °F)
● MAX DISCHARGE CURRENT : 570 A (5 sec)	STANDBY USE : 2.25±0.02 V/CELL
● STANDARD TERMINALS : RECEPTACLE TERMINAL	: (-3.3mV / °C / CELL)
● CONTAINER MATERIAL : GENERAL GRADE ABS	CYCLE USE : 2.4±0.05 V/CELL
	: (-5 mV / °C / CELL)
	● MAX CHARGING CURRENT : 45 A

☆ Dimensions



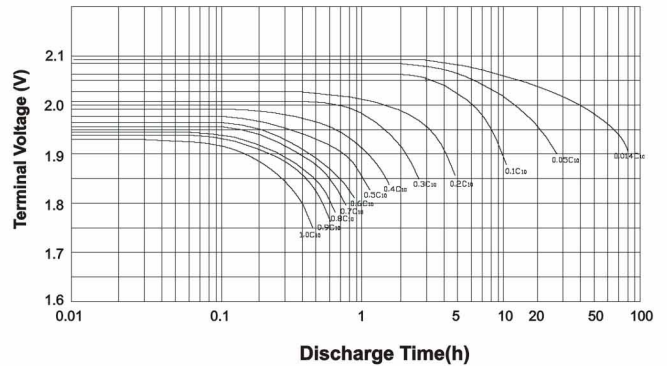
mm(inch)

☆ Terminal



mm(inch)

Discharge Characteristics 25 °C (77 °F)



OPEN CIRCUIT VOLTAGE VS REMAINING CAPACITY

AT 25°C (77°F)

