

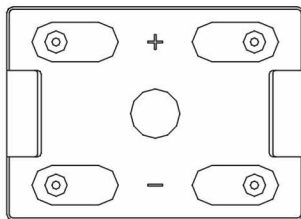


NON-SPILLABLE SEALED RECHARGEABLE BATTERY

2V, 500Ah

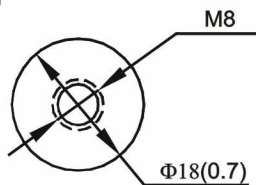
☆ SPECIFICATION	☆ CHARACTERISTICS
● NOMINAL VOLTAGE : 2 V	● CAPACITY 25 °C / 77 °F
● NOMINAL CAPACITY(10 hrs) : 500.0 Ah	10 hr @ 50A :500 Ah
● DIMENSIONS	5 hr @ 80 A :400 Ah
TOTAL HEIGHT : 366 mm (14.4 inches)	3 hr @ 125 A :375 Ah
CONTAINER HEIGHT : 331 mm (13.0 inches)	1 hr @ 275A : 275 Ah
LENGTH : 241 mm (9.5 inches)	1 C @ 500 A : 250Ah
WIDTH : 172 mm (6.8 inches)	● INTERNAL RESISTANCE(25°C , 77 °F) : 0.33 m Ω
● WEIGHT : APPROX 32.7 kg (72.1 lbs)	● CHARGING VOLTAGE (25°C , 77 °F)
● MAX DISCHARGE CURRENT : 950 A (5 sec)	STANDBY USE : 2.25±0.02 V/CELL
● STANDARD TERMINALS : RECEPTACLE TERMINAL	: (-3.3mV / °C / CELL)
● CONTAINER MATERIAL : GENERAL GRADE ABS	CYCLE USE : 2.4±0.05 V/CELL
	: (-5 mV / °C / CELL)
	● MAX CHARGING CURRENT : 75 A

☆ Dimensions



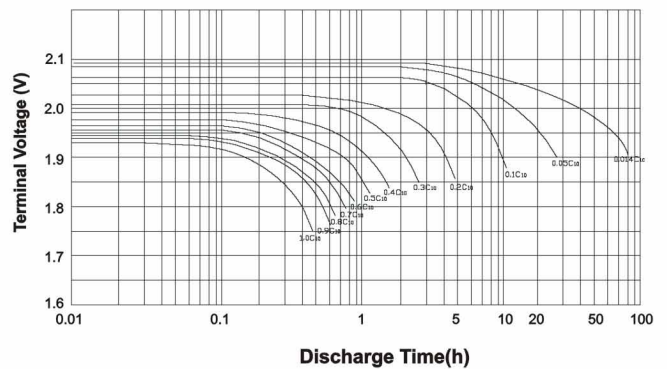
mm(inch)

☆ Terminal



mm(inch)

Discharge Characteristics 25 °C (77 °F)



OPEN CIRCUIT VOLTAGE VS REMAINING CAPACITY

AT 25°C (77°F)

